

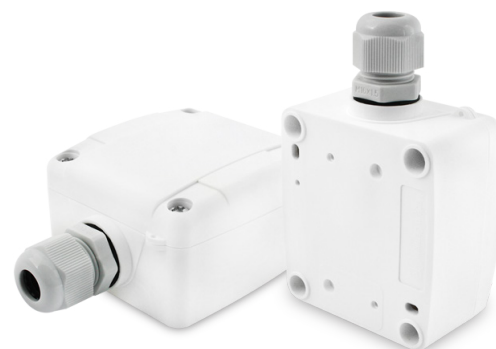
Description



The temperature sensor serie SO measures the outdoor temperature from -50 up to 90°C by a sensor built-in a robust plastic housing and is humidity and temperature resistant. The range is available with all type of current sensor elements. The temperature sensor can be mounted in climate-sensitive areas e.g. on outside walls by avoiding a direct solar radiation.

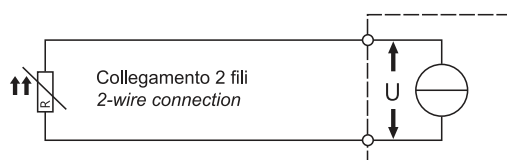
Technical specifications

Measurement range	-50...+90°C
Sensor	Pt100, Pt1000, Ni1000, KTY, NTC
Type of connection	2-wires
Measured current	approx. 1 mA
Electrical connection	Screw terminal block for wires up to 1,5 mm ²
Leakage resistance	> 100 MOhm, at +20°C (500 V DC)
Housing	Polyamide (synthetic) with snap closing screws, colour white like RAL 9010
Cable entry	M16 high-strength cable gland with strain relief
Dimensions	64x58x34,5 mm
Protection type	IP65
Storage temperature	-20...+70°C
Installation	Screw fastening
Standards	CE conformity, RoHS



Models	Type of sensor
SO1	Pt100 (DIN EN 60751 Cl. B)
SO2	Pt1000 (DIN EN 60751 Cl. B)
SO3	Ni1000 (TK6180)
SO4	Ni1000 (TK5000)
SO5	NTC20k (±1%)
SO6	NTC10k (±1%) BETA 3435K
SO7	KTY 81-110 (±1%)
SO8	KTY 81-121 (±1%)

Electrical wirings



Dimensions (mm)

